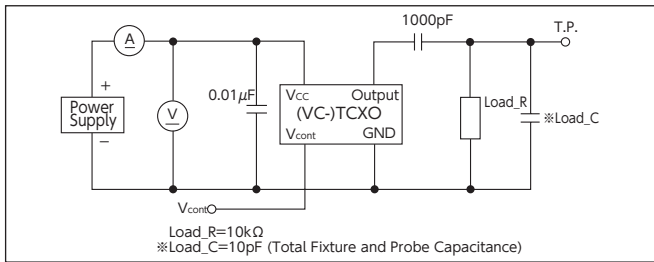
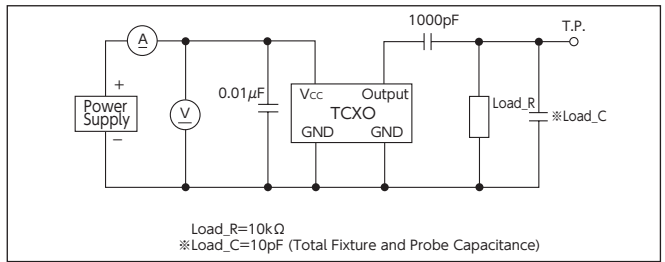


测量电路 (晶体振荡器)

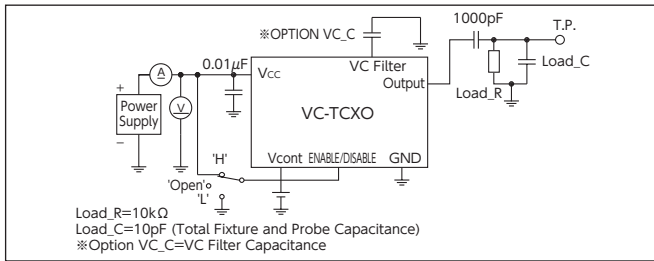
VC-TCXO (DSA * * * SDN, SP)



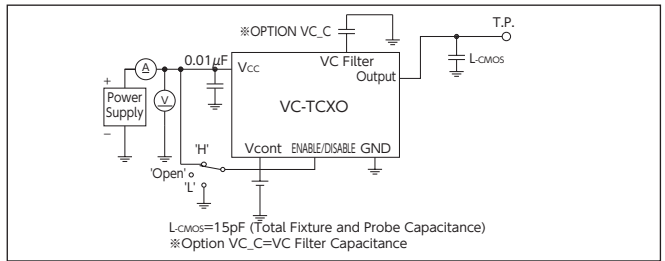
TCXO (DSB * * * SDN, SP)



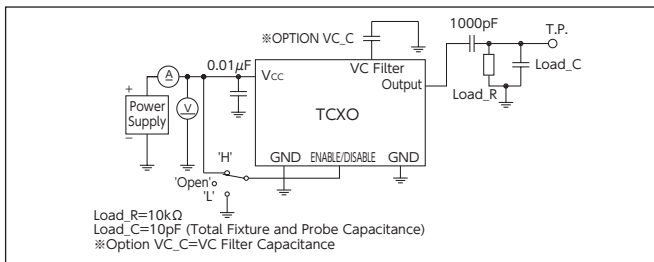
DSA535GA, DSA535GB (Clipped Sine)



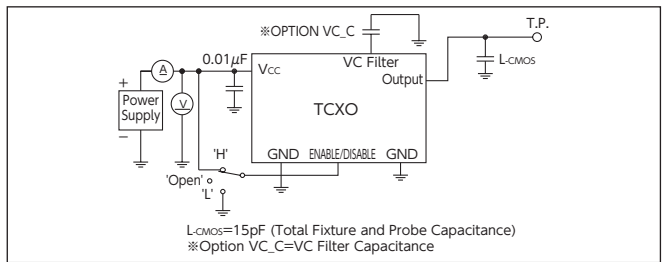
DSA535GA, DSA535GB (CMOS)



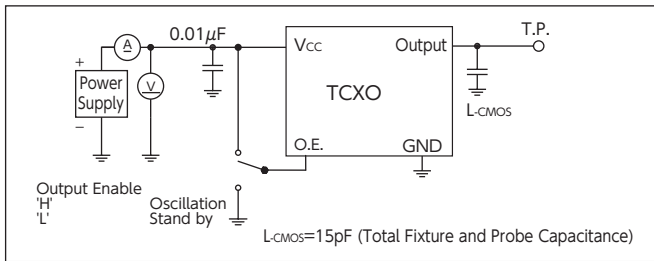
DSB535GA (Clipped Sine)



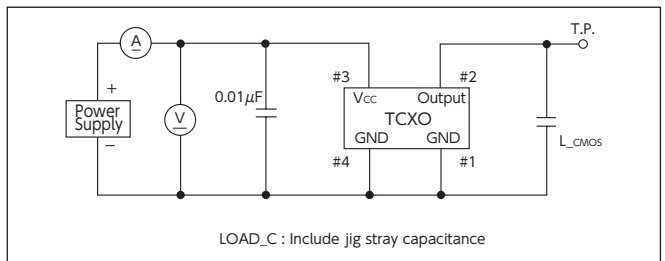
DSB535GA (CMOS)



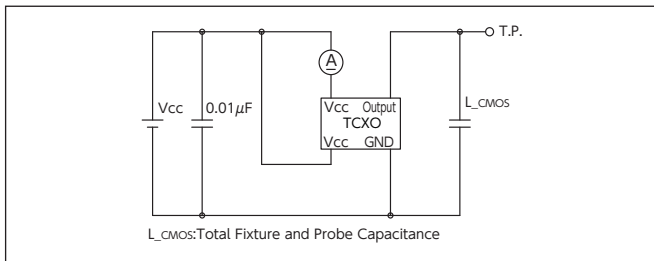
DSB211SJA, 221SJA



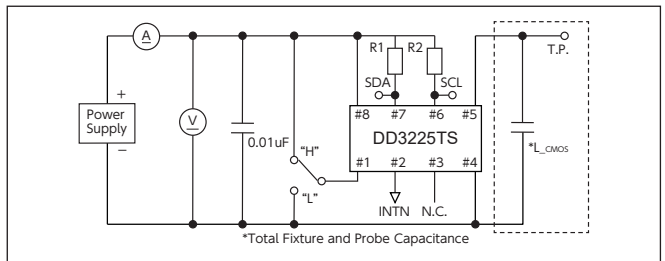
DSK1612ATD



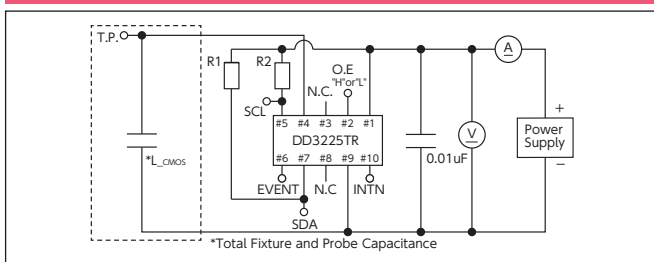
DSK321STD



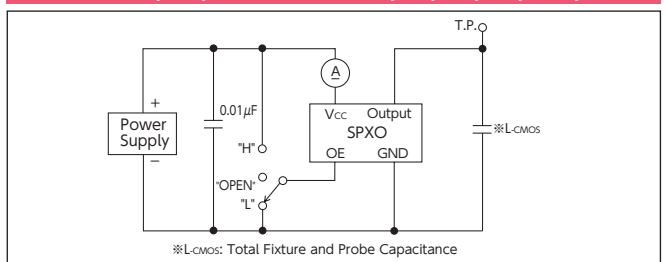
DD3225TS



DD3225TR

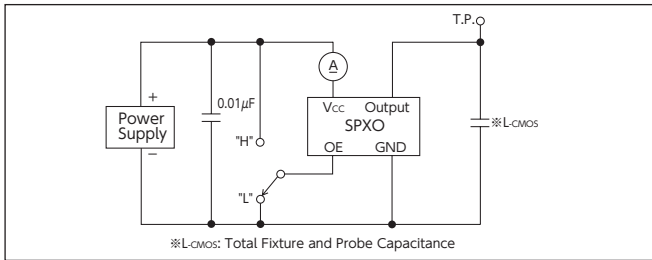


DS1008JS, JN, DSO * * * AR, SR, SH, SY, SRS, SBM

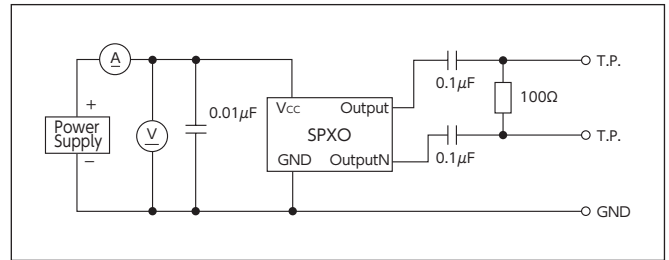


测量电路(晶体振荡器)

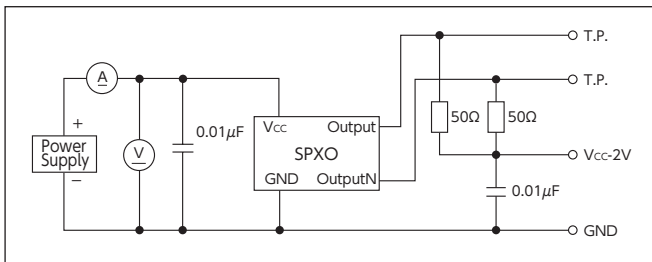
DSO ***SX, SXF



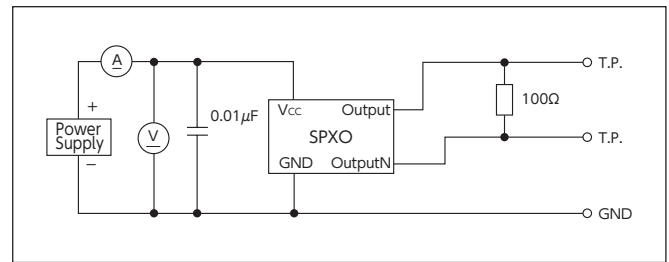
DS1008JC



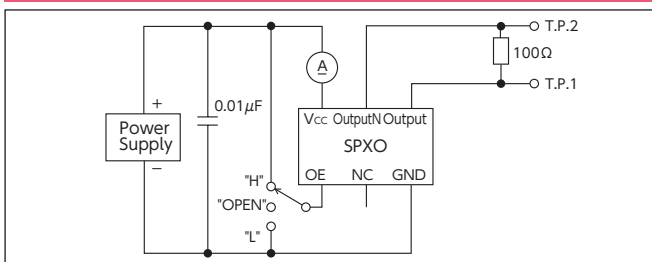
DS1008JK



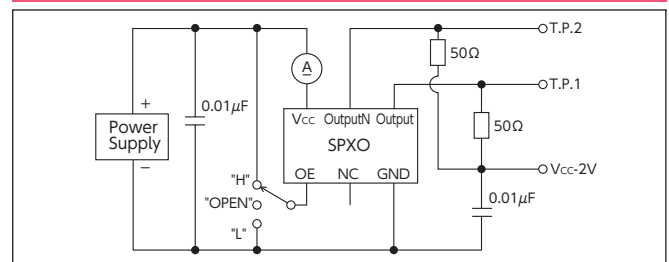
DS1008JJ



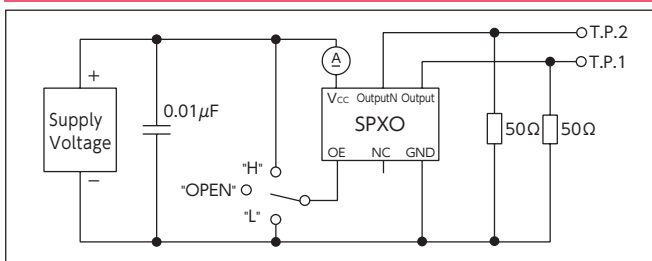
DSO223SJ, DSO323SJ, DSO533SJ, DSO753SJ



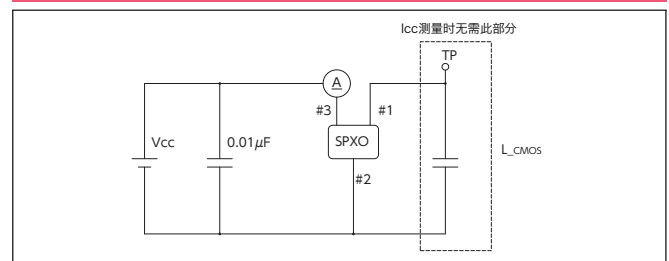
DSO223SK, DSO323SK, DSO533SK, DSO753SK



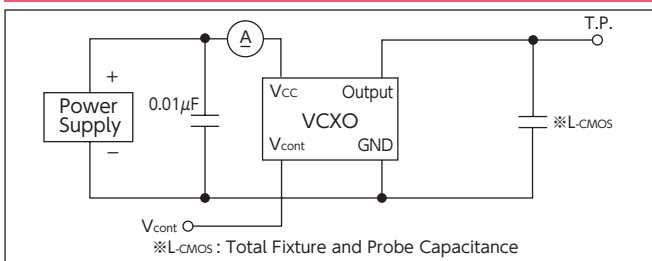
DSO223SD, DSO323SD, DSO753SD



DLO55MBA

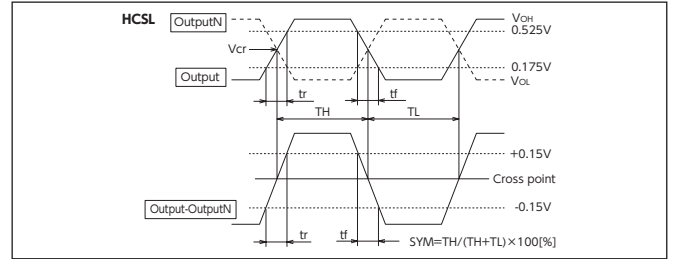
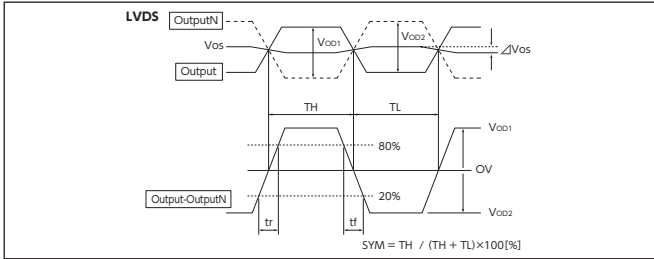
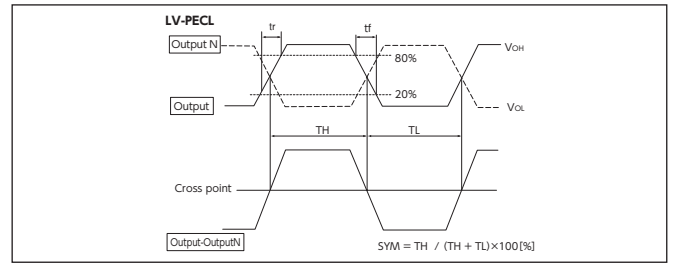
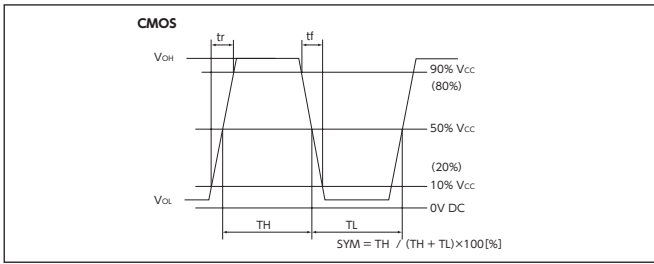


DSV221SV, 321SV



测量电路

■输出波形



■输入输出条件

