

**[IC information]**

Manufacture	ROHM
Series/Product	ML63Q2500
Type/Device Code	L63Q25**

**[Specification of Resonator]**

Model	DST1610A
Nominal Frequency	32.768kHz
Load Capacitance	7.0pF
Series Resistance	80kΩmax.

**[Measurement Results]**

Oscillation mode:LP

C1=15pF, C2=15pF

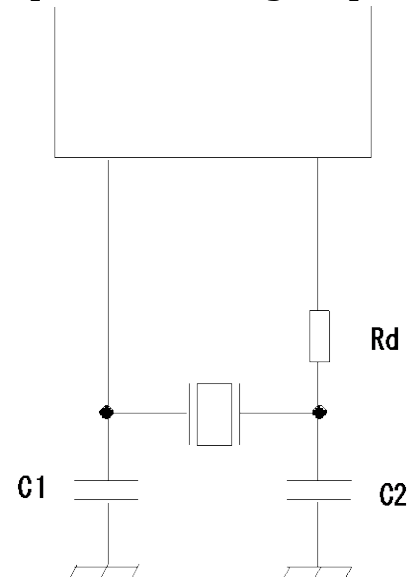
Negative Resistance	-430kΩ
Drive Level	0.2μW
Frequency Deviation	+5ppm

Measurement Results are for Reference only.

Therefore, it is necessary to conduct a survey on your board.

If you have any questions about circuit survey, please contact us by the following e-mail.

[circuitanalysis797@kds.info](mailto:circuitanalysis797@kds.info)

**[Oscillation Diagram]**

**[IC information]**

Manufacture	ROHM
Series/Product	ML63Q2500
Type/Device Code	L62Q25**

**[Specification of Resonator]**

Model	DST1610A
Nominal Frequency	32.768kHz
Load Capacitance	7.0pF
Series Resistance	80kΩmax.

**[Measurement Results]**

Oscillation mode:STD

C1=15pF, C2=15pF

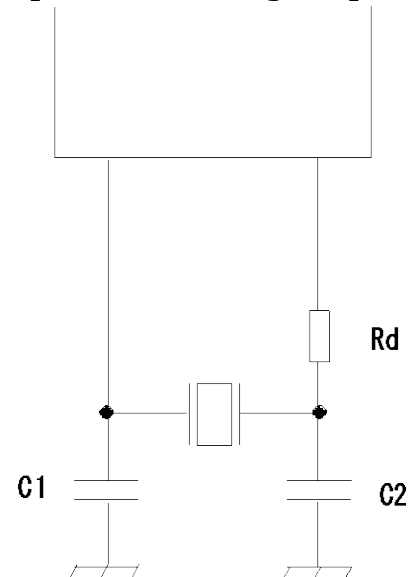
Negative Resistance	-620kΩ
Drive Level	0.2μW
Frequency Deviation	+13ppm

Measurement Results are for Reference only.

Therefore, it is necessary to conduct a survey on your board.

If you have any questions about circuit survey, please contact us by the following e-mail.

[circuitanalysis797@kds.info](mailto:circuitanalysis797@kds.info)

**[Oscillation Diagram]**

**[IC information]**

Manufacture	ROHM
Series/Product	ML63Q2500
Type/Device Code	L63Q25**

**[Specification of Resonator]**

Model	DST1610A
Nominal Frequency	32.768kHz
Load Capacitance	7.0pF
Series Resistance	80kΩmax.

**[Measurement Results]**

Oscillation mode:TOUGH

C1=15pF, C2=15pF

Negative Resistance	-1000kΩ
Drive Level	0.2μW
Frequency Deviation	+7ppm

Measurement Results are for Reference only.

Therefore, it is necessary to conduct a survey on your board.

If you have any questions about circuit survey, please contact us by the following e-mail.

[circuitanalysis797@kds.info](mailto:circuitanalysis797@kds.info)

**[Oscillation Diagram]**