

**[IC information]**

|                  |           |
|------------------|-----------|
| Manufacture      | Socionext |
| Series/Product   | SC0T51    |
| Type/Device Code | SC0T51A   |

**[Specification of Resonator]**

|                   |           |
|-------------------|-----------|
| Model             | DSX1612S  |
| Nominal Frequency | 27.000MHz |
| Load Capacitance  | 6.0pF     |
| Series Resistance | 100Ω max. |

**[Measurement Results]**

Rd=1.5kΩ, C1=8pF, C2=8pF

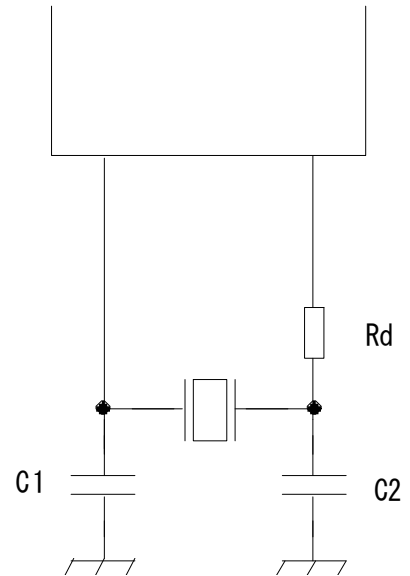
|                     |        |
|---------------------|--------|
| Negative Resistance | -1200Ω |
| Drive Level         | 48μW   |
| Frequency Deviation | +17ppm |

Measurement Results are for Reference only.

Therefore, it is necessary to conduct a survey on your board.

If you have any questions about circuit survey, please contact us by the following e-mail.

[circuitanalysis797@kds.info](mailto:circuitanalysis797@kds.info)

**[Oscillation Diagram]**

**[IC information]**

|                  |           |
|------------------|-----------|
| Manufacture      | Socionext |
| Series/Product   | SC0T51    |
| Type/Device Code | SC0T51A   |

**[Specification of Resonator]**

|                   |           |
|-------------------|-----------|
| Model             | DSX211G   |
| Nominal Frequency | 27.000MHz |
| Load Capacitance  | 6.0pF     |
| Series Resistance | 150Ω max. |

**[Measurement Results]**

Rd=1.5kΩ, C1=8pF, C2=8pF

|                     |        |
|---------------------|--------|
| Negative Resistance | -1200Ω |
| Drive Level         | 70μW   |
| Frequency Deviation | -3ppm  |

Measurement Results are for Reference only.

Therefore, it is necessary to conduct a survey on your board.

If you have any questions about circuit survey, please contact us by the following e-mail.

[circuitanalysis797@kds.info](mailto:circuitanalysis797@kds.info)

**[Oscillation Diagram]**