

[IC information]

Manufacture	Socionext
Series/Product	SC0T51
Type/Device Code	SC0T51A

[Specification of Resonator]

Model	DSX1008JS
Nominal Frequency	54.000MHz
Load Capacitance	8.0pF
Series Resistance	60Ω max.

[Measurement Results]

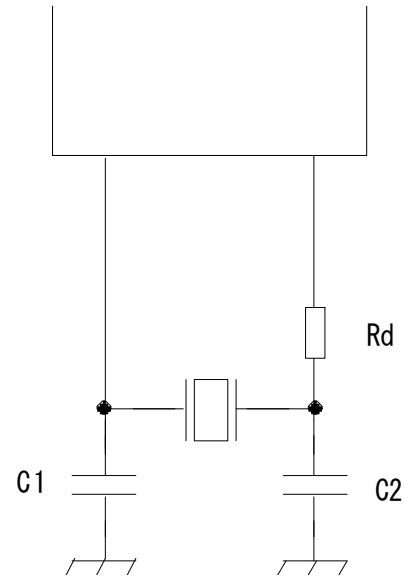
Rd=1.0kΩ, C1=6pF, C2=6pF

Negative Resistance	-330Ω
Drive Level	78μW
Frequency Deviation	+33ppm

Measurement Results are for Reference only.
Therefore, it is necessary to conduct a survey on your board.
If you have any questions about circuit survey, please contact us
by the following e-mail.

circuitanalysis797@kds.info

[Oscillation Diagram]



[IC information]

Manufacture	Socionext
Series/Product	SC0T51
Type/Device Code	SC0T51A

[Specification of Resonator]

Model	DSX1612S
Nominal Frequency	54.000MHz
Load Capacitance	5.2pF
Series Resistance	50Ω max.

[Measurement Results]

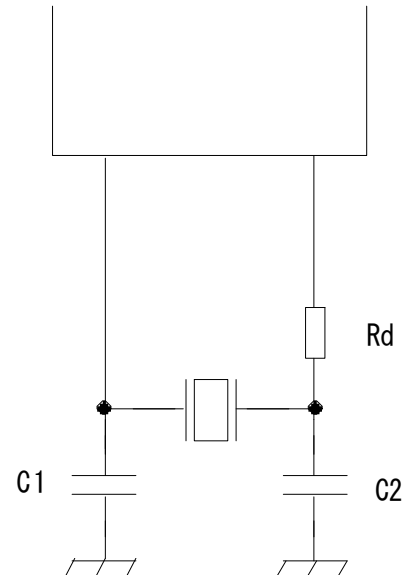
Rd=680Ω, C1=6pF, C2=6pF

Negative Resistance	-510Ω
Drive Level	83μW
Frequency Deviation	-2ppm

Measurement Results are for Reference only.
Therefore, it is necessary to conduct a survey on your board.
If you have any questions about circuit survey, please contact us
by the following e-mail.

circuitanalysis797@kds.info

[Oscillation Diagram]



[IC information]

Manufacture	Socionext
Series/Product	SC0T51
Type/Device Code	SC0T51A

[Specification of Resonator]

Model	DSX211G
Nominal Frequency	54.000MHz
Load Capacitance	5.2pF
Series Resistance	80Ω max.

[Measurement Results]

Rd=680Ω, C1=6pF, C2=6pF

Negative Resistance	-560Ω
Drive Level	132μW
Frequency Deviation	-2ppm

Measurement Results are for Reference only.
Therefore, it is necessary to conduct a survey on your board.
If you have any questions about circuit survey, please contact us
by the following e-mail.

circuitanalysis797@kds.info

[Oscillation Diagram]

